



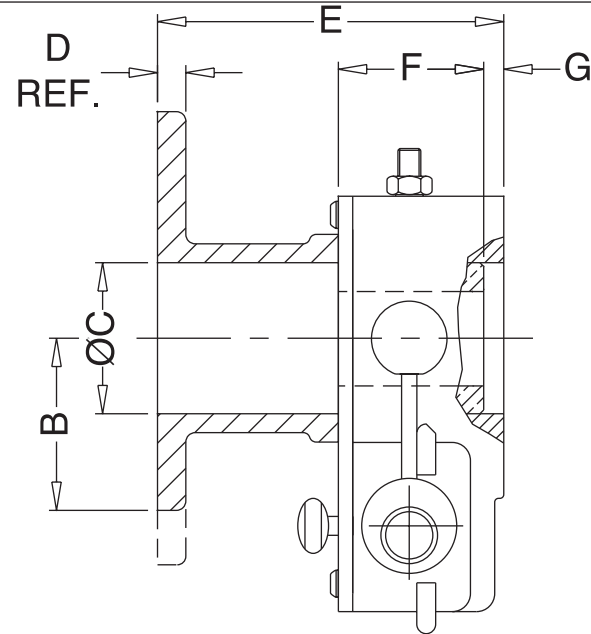
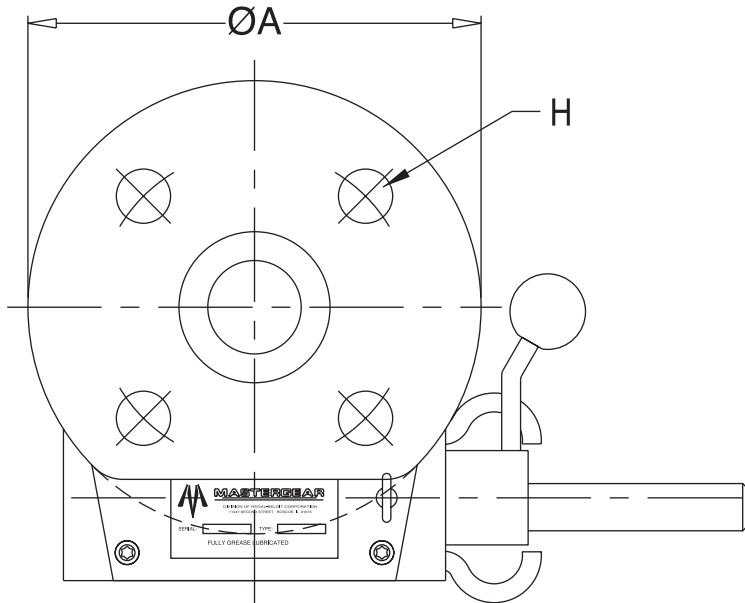
MASTERGEAR
 DIVISION OF REGAL-BELOIT CORPORATION
 5466 EAST ROCKTON RD. SOUTH BELOIT, IL 61080

THIS DRAWING/DESIGN IS
 THE PROPERTY OF
 MASTERGEAR, AND MUST
 NOT BE USED WITHOUT
 THEIR SPECIFIC WRITTEN
 CONSENT. ©

DO NOT
 SCALE

DRAWING
 No. IJU 5000-A
 REV. C
 3/4/99

DECLUTCH COVER FLANGES



UNIT	A	B	C	D	E	F	G	H
MXF	3.54	1.77	1.400	0.39	4.12	1.87	0.25	F07
MZF	3.54	1.77	1.400	0.39	4.32	2.07	0.25	F07
MZF	4.92	2.46	1.680	0.39	4.68	2.07	0.25	F10
MVF	5.00	2.16	1.650	0.45	4.99	2.64	0.37	F07, F10
MVF	5.90	2.16	2.200	0.43	5.23	2.64	0.37	F10, F12
MAF	5.90	2.95	2.200	0.45	5.70	2.89	0.37	F10, F12
MAF	6.90	3.45	2.200	0.34	5.70	2.89	0.37	F10, F12, F14
MCF	8.27	4.14	3.500	0.55	6.95	3.32	0.37	F12, F14, F16

NOTE:

1. MXF-MZF FLANGES ARE BOLTED DIRECTLY TO THE COVERS
2. MVF, MAF, & MCF COVER AND FLANGES ARE ONE PIECE.