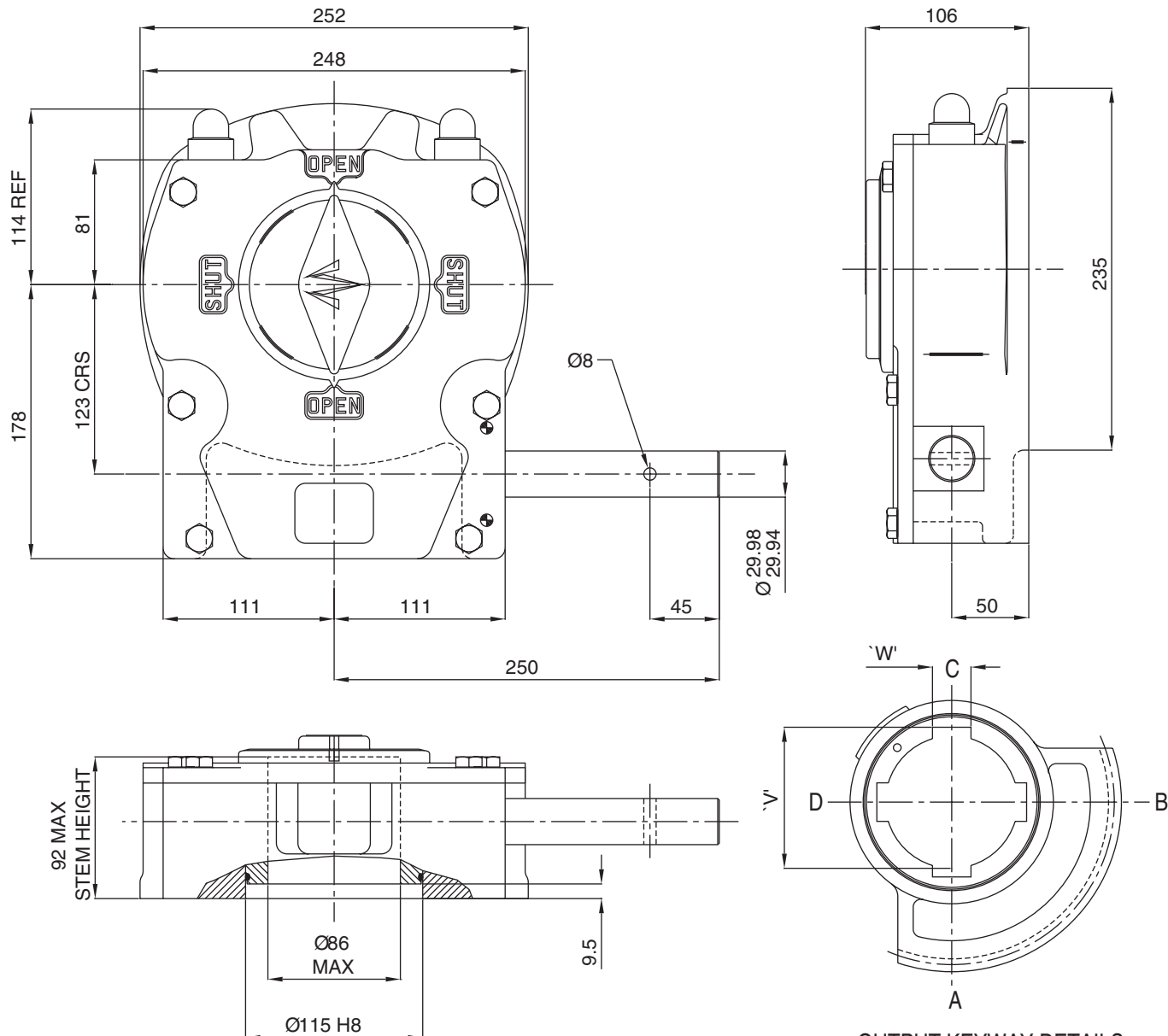


# ACTUATOR TYPE - M15



## GENERAL INFORMATION

TRAVEL.....90° +/- 5° AT BOTH ENDS  
 RATIO.....68:1  
 TURNS TO CLOSE.....17

MECHANICAL ADVANTAGE.....20.5 +/- 10%  
 MAXIMUM OUTPUT TORQUE.....3400 Nm  
 MAXIMUM INPUT TORQUE.....166 Nm

MOUNTING HOLE DETAIL: PREFERRED.....F16 (4 x M20 ON 165 PCD)  
 MAXIMUM.....F20 (8 x M12 ON 197 PCD)  
 MINIMUM.....F14 (4 x M16 ON 140 PCD)

APPROXIMATE WEIGHT.....27.2 Kg (excluding handwheel)

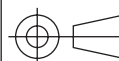
## OUTPUT KEYWAY DETAILS SHOWN IN OPEN POSITION

HANDWHEEL DATA	
TYPE	DIA
R18	450
R24	600
R30	750
R36	900



**OPPERMAN MASTERGEAR**

Hambridge Road, Newbury, Berkshire, RG14 5TS. ENGLAND  
 Telephone: (01635) 811500 Telefax: (01635) 811501



DIMENSIONS IN	SCALE	DRAWING No.
MM INCHES	1:4	ME-15305

THIS DRAWING/DESIGN IS THE PROPERTY OF OPPERMAN MASTERGEAR LTD. AND ©  
 MUST NOT BE USED OR COPIED WITHOUT THEIR SPECIFIC WRITTEN CONSENT.

REV. B  
 21SEP94