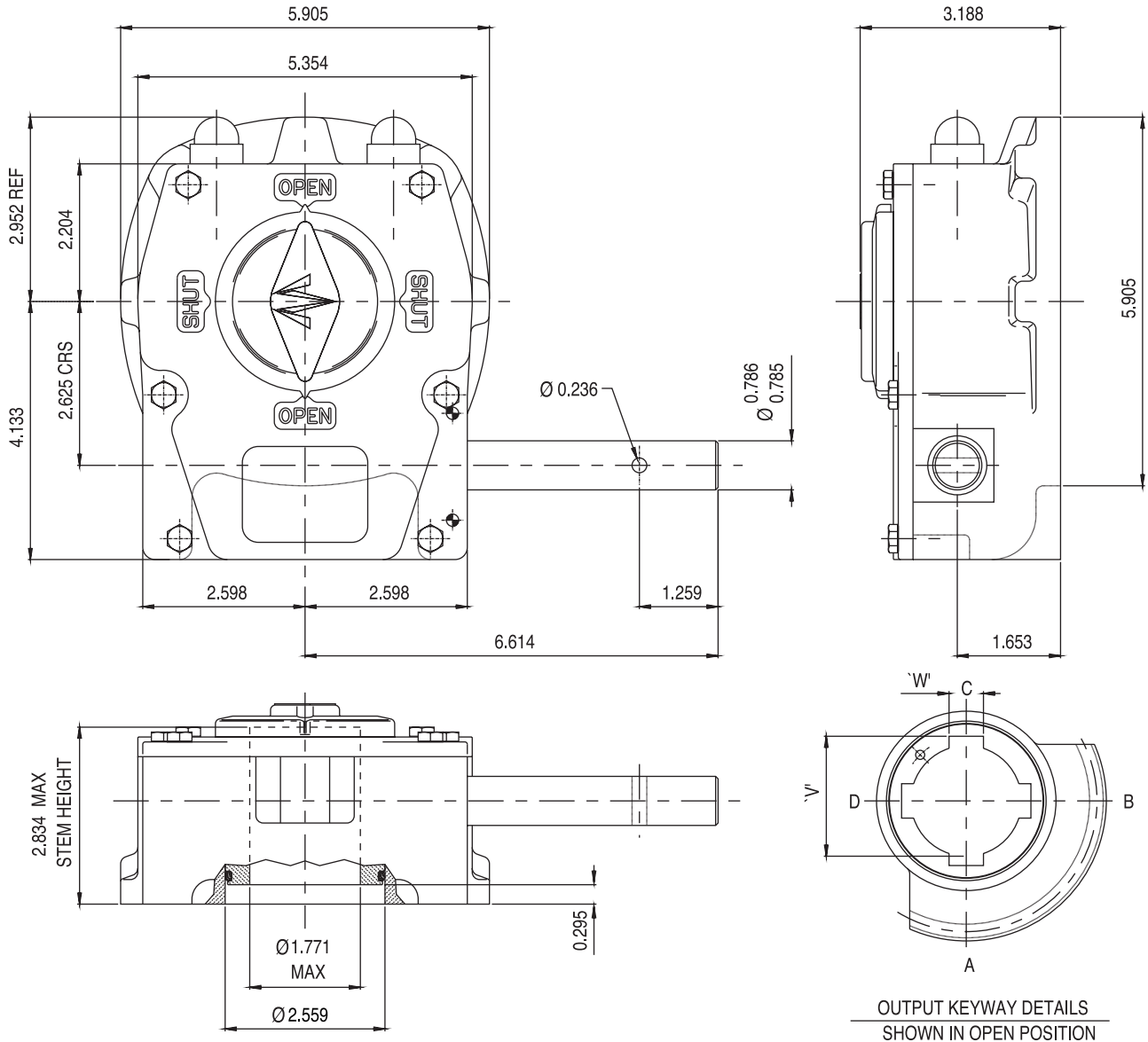


ACTUATOR TYPE - M12



GENERAL INFORMATION

TRAVEL..... $90^{\circ} \pm 5^{\circ}$ AT BOTH ENDS
 RATIO.....42:1
 TURNS TO CLOSE.....10.5

MECHANICAL ADVANTAGE..... $11.3 \pm 10\%$
 MAXIMUM OUTPUT TORQUE.....8800 IN-LB
 MAXIMUM INPUT TORQUE.....779 IN-LB

MOUNTING HOLE DETAIL: PREFERRED....FA12 (4 x 1/2-13 ON 4.95 BCD)
 MAXIMUM.....FA14 (4 x 5/8-11 ON 5.50 BCD)
 MINIMUM.....FA10 (4 x 3/8-16 ON 4.00 BCD)

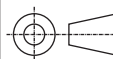
APPROXIMATE WEIGHT.....18.2 LB(8.2 KG) (excluding handwheel)

HANDWHEEL DATA	
\varnothing	RIM PULL AT MAX. TORQUE
R10	156 LBS
R12	130 LBS
R14	111 LBS
R18	87 LBS
R24	65 LBS



MASTERGEAR

DIVISION OF REGAL-BELOIT CORPORATION
 5466 EAST ROCKTON RD. · SOUTH BELOIT, IL 61080



DIMENSIONS IN	SCALE	DRAWING No.
INCH	1:1	M12

THIS DRAWING/DESIGN IS THE PROPERTY OF MASTERGEAR AND MUST © NOT BE USED OR COPIED WITHOUT THEIR SPECIFIC WRITTEN CONSENT.

JRH

REV. A
 5/13/02