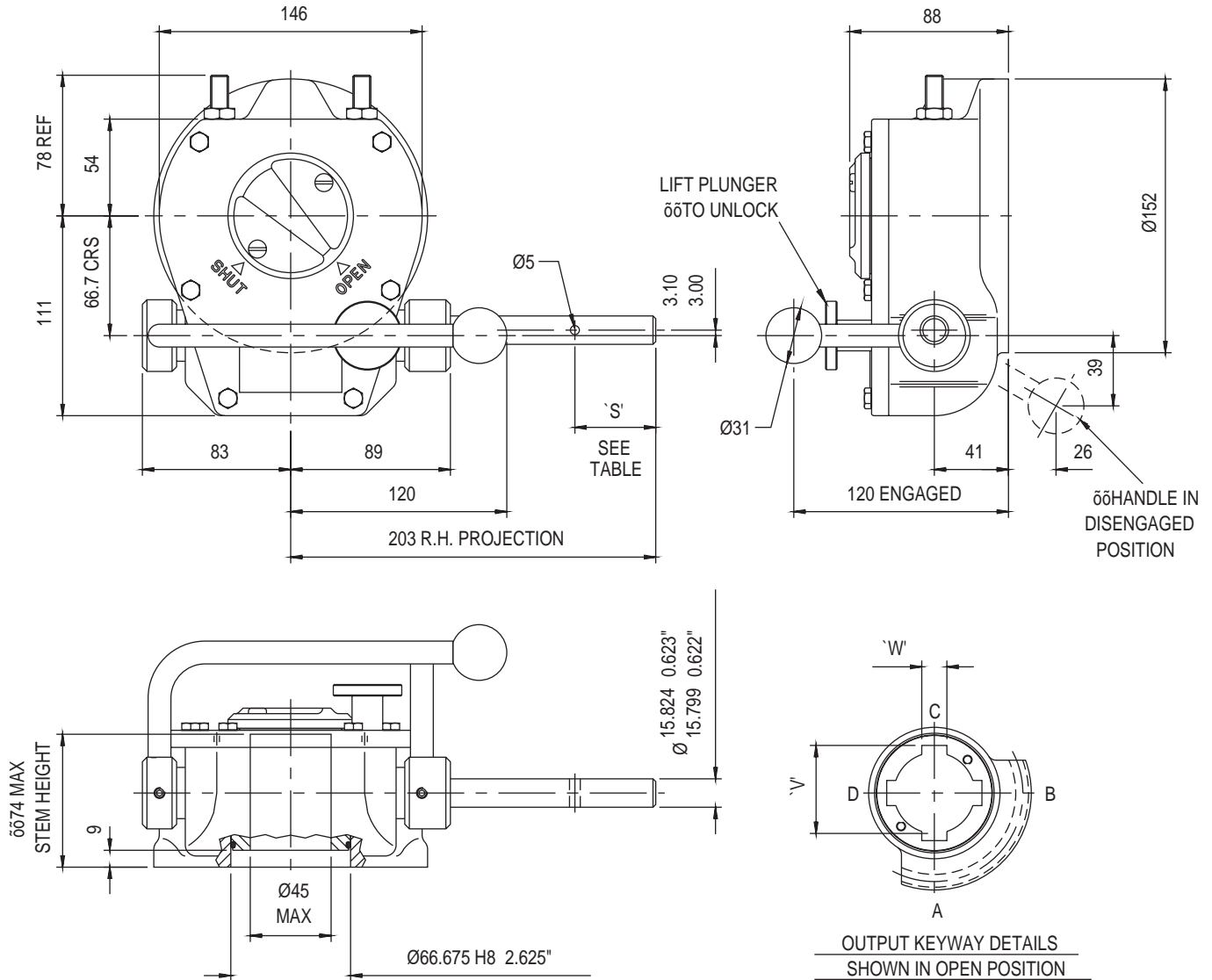


ACTUATOR TYPE - MVWD43



GENERAL INFORMATION

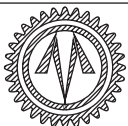
TRAVEL.....90° +/- 5° AT BOTH ENDS
 RATIO.....43:1
 TURNS TO CLOSE.....10.75

MECHANICAL ADVANTAGE.....11.6 +/- 10%
 MAXIMUM OUTPUT TORQUE.....678 Nm
 MAXIMUM INPUT TORQUE.....58.5 Nm

MOUNTING HOLE DETAIL: PREFERRED....F12 (4 x M12 ON 125 PCD)
 MAXIMUM.....F12
 MINIMUM.....F10 (4 x M10 ON 102 PCD)

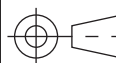
APPROXIMATE WEIGHT.....10 Kg (excluding handwheel)

HANDWHEEL DATA		
HANDWHEEL DIA		'S'
8"	203	25
10"	254	32
12"	305	32



OPPERMAN MASTERGEAR

Hambridge Road, Newbury, Berkshire, RG14 5TS. ENGLAND
 Telephone: (01635) 811500 Telefax: (01635) 811501



DIMENSIONS
IN

SCALE

DRAWING
No.

MM INCHES

1:3.5

ME-15701

THIS DRAWING/DESIGN IS THE PROPERTY OF OPPERMAN MASTERGEAR LTD. AND ©
 MUST NOT BE USED OR COPIED WITHOUT THEIR SPECIFIC WRITTEN CONSENT.

REV. A
 20APR95