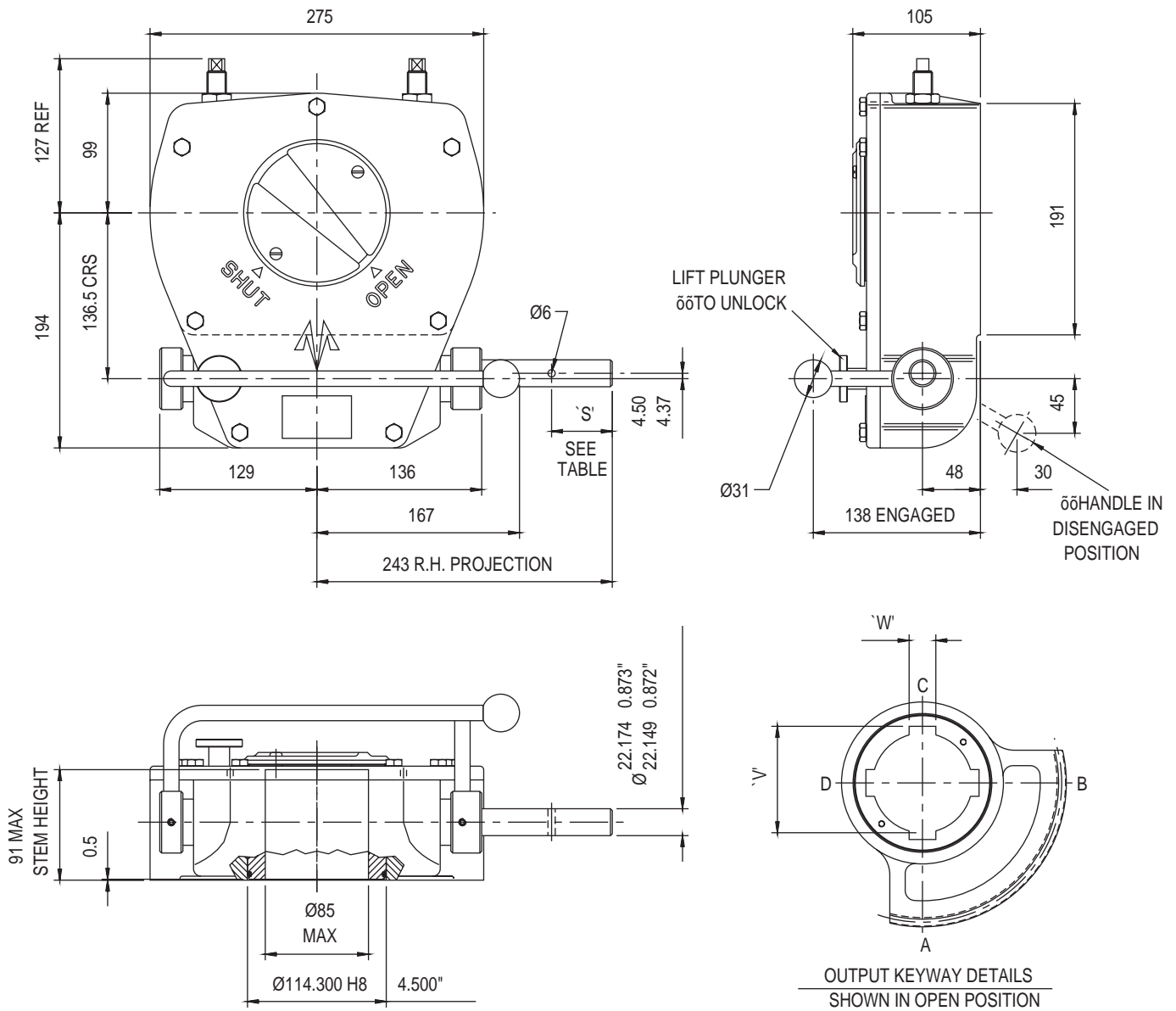


# ACTUATOR TYPE - MCWD54



## GENERAL INFORMATION

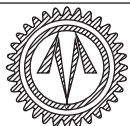
TRAVEL.....90° +/- 5° AT BOTH ENDS  
 RATIO.....54:1  
 TURNS TO CLOSE.....13.5

MECHANICAL ADVANTAGE.....16.7 +/- 10%  
 MAXIMUM OUTPUT TORQUE.....2712 Nm  
 MAXIMUM INPUT TORQUE.....162.4 Nm

MOUNTING HOLE DETAIL: PREFERRED....F16 (4 x M20 ON 165 PCD)  
 MAXIMUM.....F16  
 MINIMUM.....F14 (4 x M16 ON 140 PCD)

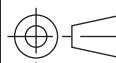
APPROXIMATE WEIGHT.....33 Kg (excluding handwheel)

HANDWHEEL DATA		
HANDWHEEL DIA		'S'
8"	203	25
10"	254	32
12"	305	32
14"	356	32
18"	457	45
24"	610	45



**OPPERMAN MASTERGEAR**

Hambridge Road, Newbury, Berkshire, RG14 5TS. ENGLAND  
 Telephone: (01635) 811500 Telefax: (01635) 811501



DIMENSIONS  
 IN  
 MM INCHES

SCALE  
 1:5

DRAWING  
 No.  
 ME-15703