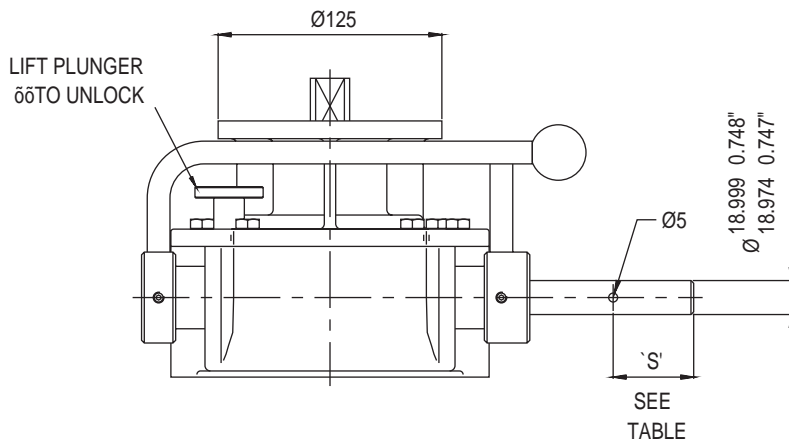
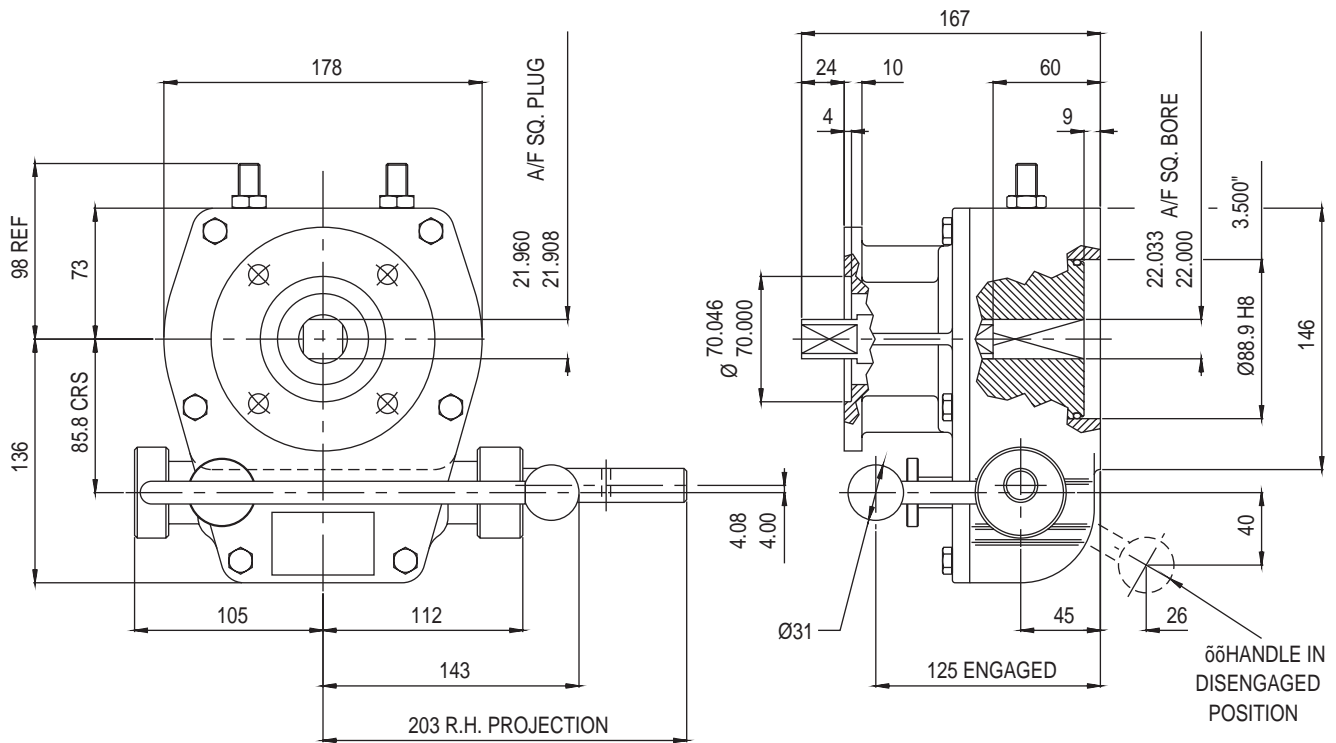


# ACTUATOR TYPE - MAWD44/TF10TP



NOTE.  
ISO 5211 VERSION SHOWN WITH  
OUTPUT BORE & TORQUE PLUG  
FLATS ON CENTRES.  
DIN 3337 VERSION ALSO AVAILABLE  
WITH OUTPUT BORE & TORQUE PLUG  
CORNERS ON CENTRES.

## GENERAL INFORMATION

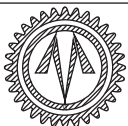
TRAVEL.....90° +/- 5° AT BOTH ENDS  
RATIO.....44:1  
TURNS TO CLOSE.....11

MECHANICAL ADVANTAGE.....12.6 +/- 10%  
MAXIMUM OUTPUT TORQUE.....1243 Nm  
MAXIMUM INPUT TORQUE.....98.7 Nm

BASE MOUNTING HOLE DETAIL.....F12 (4 x M12 ON 125 PCD)  
TOP MOUNTING HOLE DETAIL.....4 x ø11 ON 102 PCD OFF CRS

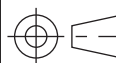
APPROXIMATE WEIGHT.....18 Kg (excluding handwheel)

HANDWHEEL DATA		
HANDWHEEL DIA	'S'	
8"	203	25
10"	254	32
12"	305	32
14"	356	32
18"	457	45



## OPPERMAN MASTERGEAR

Hambridge Road, Newbury, Berkshire, RG14 5TS. ENGLAND  
Telephone: (01635) 811500 Telefax: (01635) 811501



DIMENSIONS  
IN

SCALE

DRAWING  
No.

MM INCHES

1:4

ME-15721

THIS DRAWING/DESIGN IS THE PROPERTY OF OPPERMAN MASTERGEAR LTD. AND ©  
MUST NOT BE USED OR COPIED WITHOUT THEIR SPECIFIC WRITTEN CONSENT.

REV. B  
11MAY99