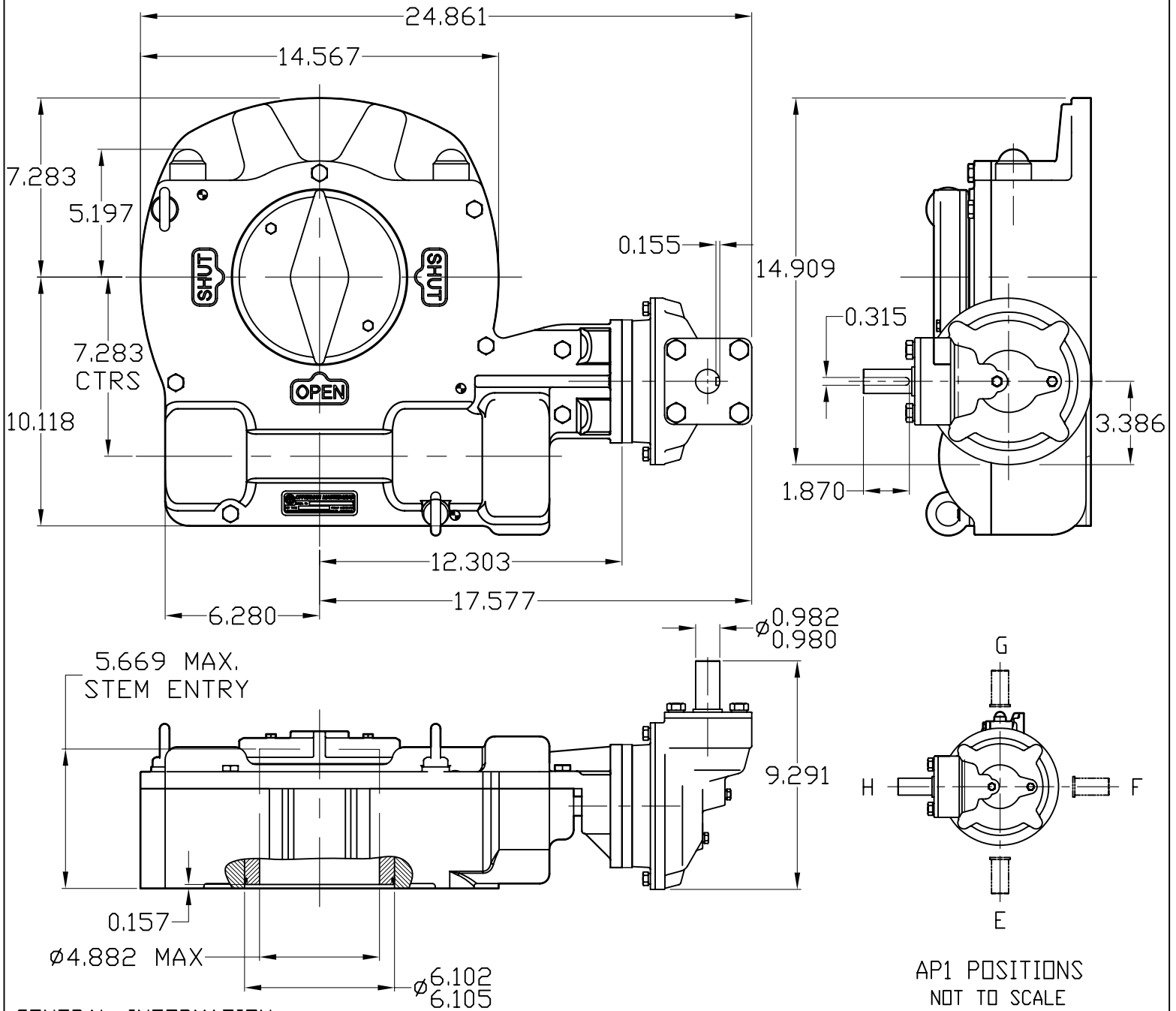


ACTUATOR: MF30/AP1



GENERAL INFORMATION

TRAVEL.....90° ±5° AT BOTH ENDS MECHANICAL ADVANTAGE.....148.5 ±10%
 RATIO.....544.63:1 MAXIMUM OUTPUT TORQUE(5000 CYCLES)..96000 IN-LBS
 TURNS TO CLOSE.....136.2 MAXIMUM INPUT TORQUE(5000 CYCLES).....646 IN-LBS

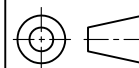
MOUNTING HOLE DETAIL: PREFERRED...FA30 (8 × 3/4-10 ON 11.75" BCD)
 (MSS SP-101) MAXIMUM.....FA30
 MINIMUM.....FA19 (8 × 5/8-11 ON 7.50" BCD)

APPROXIMATE WEIGHT.....214.69 LB



MASTERGEAR

A REGAL BELOIT COMPANY
 5466 EAST ROCKTON RD. · SOUTH BELOIT, IL 61080



DIMENSIONS
 IN
 INCHES

SCALE

1:6

DRAWING
 No.

MF30/AP1

THIS PRINT IS CONFIDENTIAL AND IS THE PROPERTY OF MASTERGEAR. THIS PRINT SHALL NOT BE USED,
 COPIED OR REPRODUCED IN WHOLE OR IN PART NOR SHALL THE CONTENTS BE REVEALED IN ANY
 MANNER TO ANYONE UNLESS WRITTEN PERMISSION IS OBTAINED FROM MASTERGEAR.

NJC

REV. -
 -