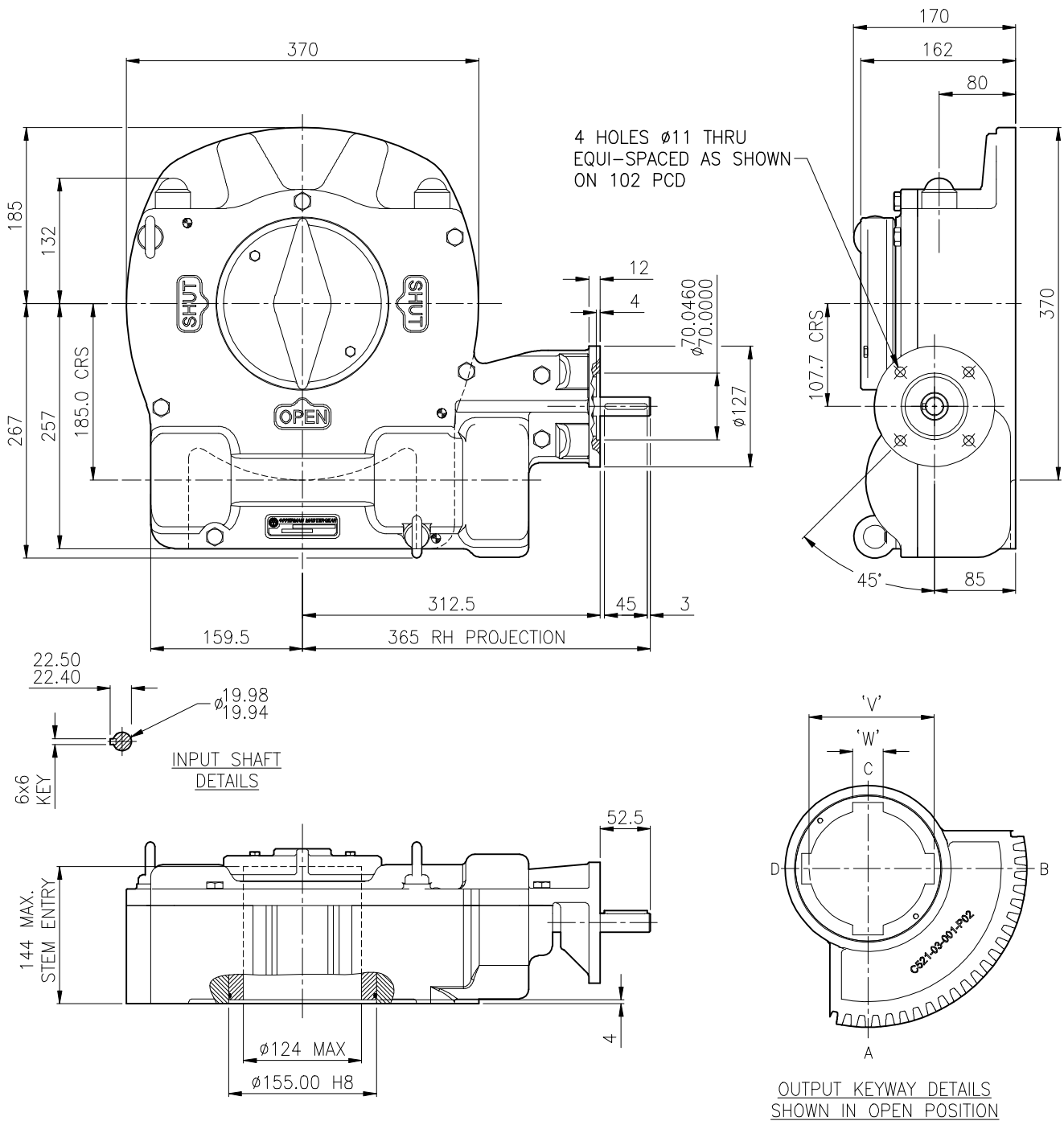


# ACTUATOR: MF30/F10

SL039



TRAVEL .....  $90^\circ \pm 5^\circ$  AT BOTH ENDS  
RATIO ..... 309.1:1  
TURNS TO CLOSE ..... 77.3  
MECHANICAL ADVANTAGE ...  $99 \pm 10\%$

MAXIMUM OUTPUT TORQUE (1000 CYCLES)..... 13000 Nm  
MAXIMUM OUTPUT TORQUE (5000 CYCLES)..... 10800 Nm  
MAXIMUM INPUT TORQUE (1000 CYCLES)..... 131 Nm  
MAXIMUM INPUT TORQUE (5000 CYCLES)..... 109 Nm

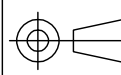
MOUNTING HOLE DETAIL (BSENISO 5211:2001)  
PREFERRED ..... F30 (8 x M20 on 298 PCD)  
MAXIMUM ..... F30 (8 x M20 on 298 PCD)  
MINIMUM ..... F20 (8 x M12 on 197 PCD)

APPROXIMATE WEIGHT ..... 87 kg



## OPPERMAN MASTERGEAR

Hambridge Lane, Newbury, Berkshire, RG14 5TS. ENGLAND  
Tel: 01635 811500 Fax: 01635 811501 E-Mail: sales@opperman-mastergear.co.uk



To BS308

DIMENSIONS  
IN  
MM [INCHES]

DATE	23Aug05
DRAWN	BJH
CHECKED	MAB
SCALE	1:6

This drawing/design is the property of OPPERMAN MASTERGEAR Ltd. © and must not be used or copied without their specific written consent. Specifications may change without prior notification

DRG No. ME-15371

REV. A