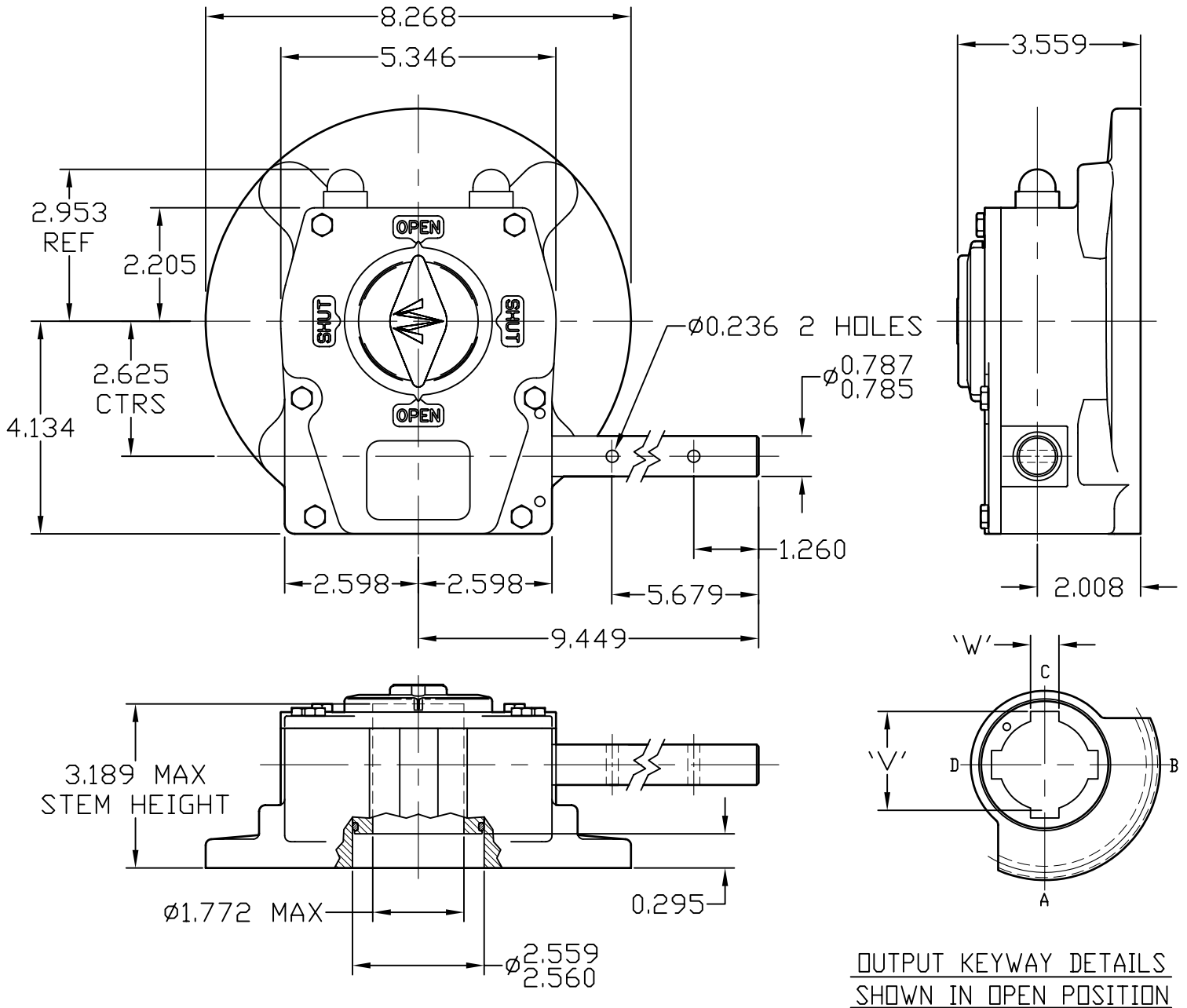


ACTUATOR: M12FB

SL039



GENERAL INFORMATION

TRAVEL.....	90° ±5° AT BOTH ENDS	MAX. OUTPUT TORQUE (1000 CYCLES).....	10560 IN-LBS
RATIO.....	42:1	MAX. OUTPUT TORQUE (5000 CYCLES).....	8800 IN-LBS
TURNS TO CLOSE.....	10.5	MAX. INPUT TORQUE (1000 CYCLES).....	935 IN-LBS
MECHANICAL ADVANTAGE.....	11.3 ±10%	MAX. INPUT TORQUE (5000 CYCLES).....	779 IN-LBS

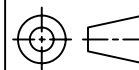
MOUNTING HOLE DETAIL (MSS SP-101): MAXIMUM...FA16 (4 x 3/4-10 ON 6.50 BCD)

APPROXIMATE WEIGHT.....23.81 LB



MASTERGEAR

A REGAL BELOIT COMPANY
5466 EAST ROCKTON RD. · SOUTH BELOIT, IL 61080



DIMENSIONS
IN
INCHES

SCALE

1:3

DRAWING
No.

M12FB

THIS PRINT IS CONFIDENTIAL AND IS THE PROPERTY OF MASTERGEAR. THIS PRINT SHALL NOT BE USED, COPIED OR REPRODUCED IN WHOLE OR IN PART NOR SHALL THE CONTENTS BE REVEALED IN ANY MANNER TO ANYONE UNLESS WRITTEN PERMISSION IS OBTAINED FROM MASTERGEAR. ©

NJC

REV. A
4/5/05