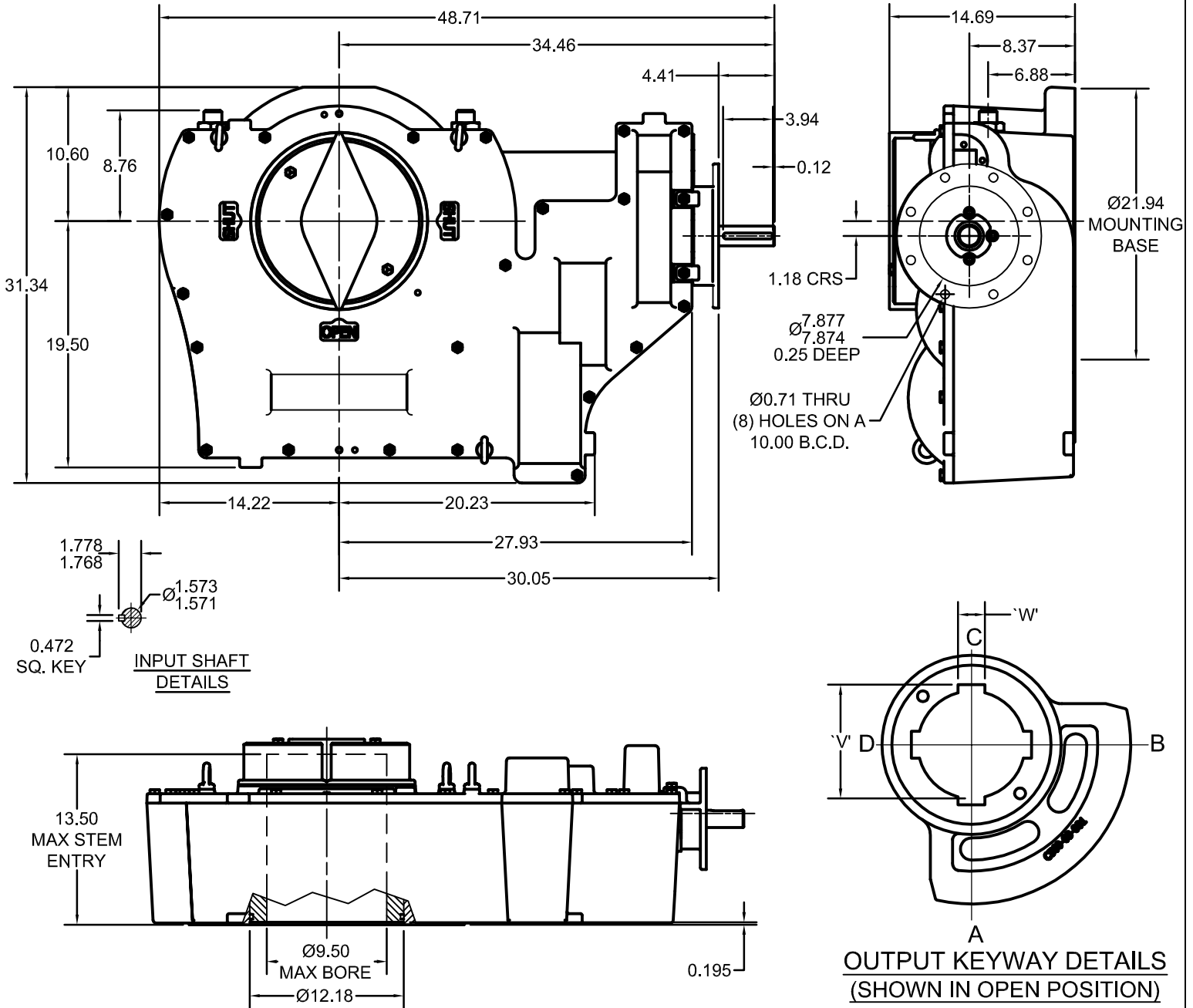


ACTUATOR: MF70.1/F25

SL039



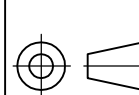
GENERAL INFORMATION

TRAVEL.....90° ±5° AT BOTH ENDS
 RATIO.....523.8:1
 TURNS TO CLOSE.....130.95
 MECHANICAL ADVANTAGE...116.5 ±10%

MAXIMUM OUTPUT TORQUE(2500 CYCLES)....1,500,000 IN-LBS
 MAXIMUM INPUT TORQUE(2500 CYCLES).....12,876 IN-LBS

MOUNTING HOLE DETAIL: PREFERRED....FA48 (12 x 1 1/4 ON 19.00" BCD)
 (MSS SP-101) MAXIMUM.....FA48
 MINIMUM.....FA40 (8 x 1 1/4 ON 16.00" BCD)

APPROXIMATE WEIGHT.....1,732 LBS



DIMENSIONS
IN
INCHES

SCALE

1:12

DRAWING
No.

MF70/F25

THIS PRINT IS CONFIDENTIAL AND IS THE PROPERTY OF MASTERGEAR. THIS PRINT SHALL NOT BE USED, COPIED OR REPRODUCED IN WHOLE OR IN PART NOR SHALL THE CONTENTS BE REVEALED IN ANY MANNER TO ANYONE UNLESS WRITTEN PERMISSION IS OBTAINED FROM MASTERGEAR.

NJC

REV. A
3/10/11