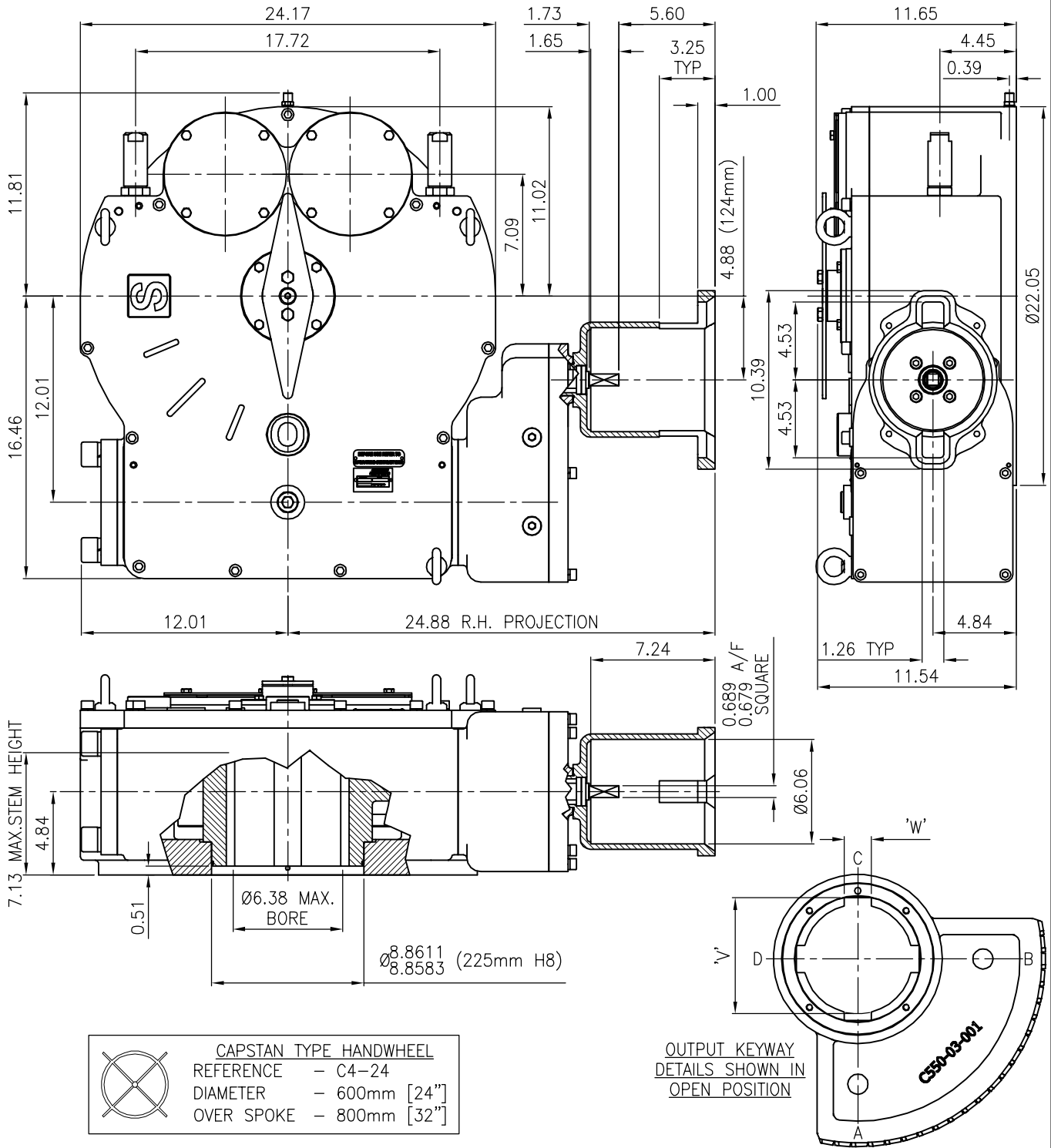


ACTUATOR: M50 SUBSEA (CLASS 1 & 2) SL150



TRAVEL 90° ±5' AT BOTH ENDS
 RATIO 1219.8:1
 TURNS TO CLOSE 304.95

MECHANICAL ADVANTAGE..... 384.6 ±10%
 MAXIMUM OUTPUT TORQUE (1000 CYCLES)..... 442300 lb.ins.
 MAXIMUM INPUT TORQUE (1000 CYCLES)..... 1150 lb.ins.

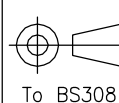
MOUNTING HOLE DETAIL (BSENISO 5211:2001)
 PREFERRED F48 (12 x M36 on 19.16" PCD)
 MAXIMUM F48 (12 x M36 on 19.16" PCD)
 MINIMUM F25 (8 x M16 on 10.00" PCD)

APPROXIMATE WEIGHT 963 lb.



OPPERMAN MASTERGEAR

Hambridge Lane, Newbury, Berkshire, RG14 5TS. ENGLAND
 Tel: 01635 811500 Fax: 01635 811501 E-Mail: sales@opperman-mastergear.co.uk



To BS308

DIMENSIONS IN
 MM [INCHES]

DATE	18Aug09
DRAWN	PAB
CHECKED	
SCALE	1:8

This drawing/design is the property of OPPERMAN MASTERGEAR Ltd. © and must not be used or copied without their specific written consent. Specifications may change without prior notification

DRG No. ME-16168-2-imp

REV. A