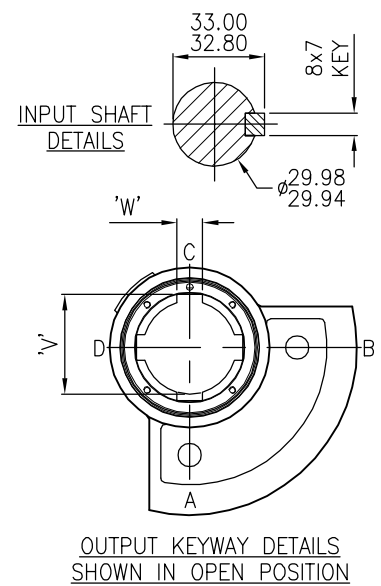
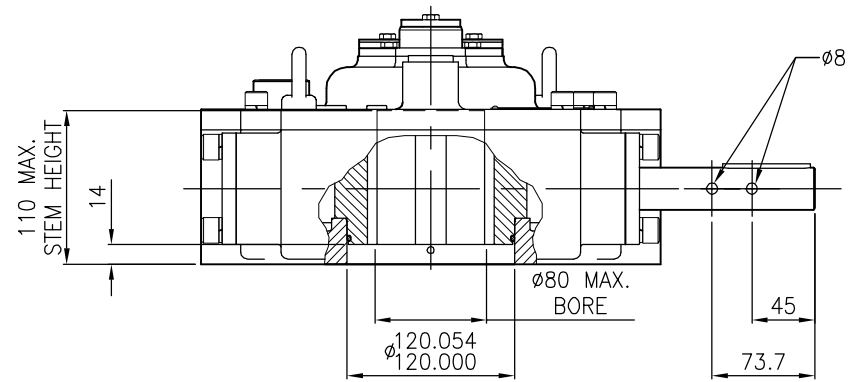
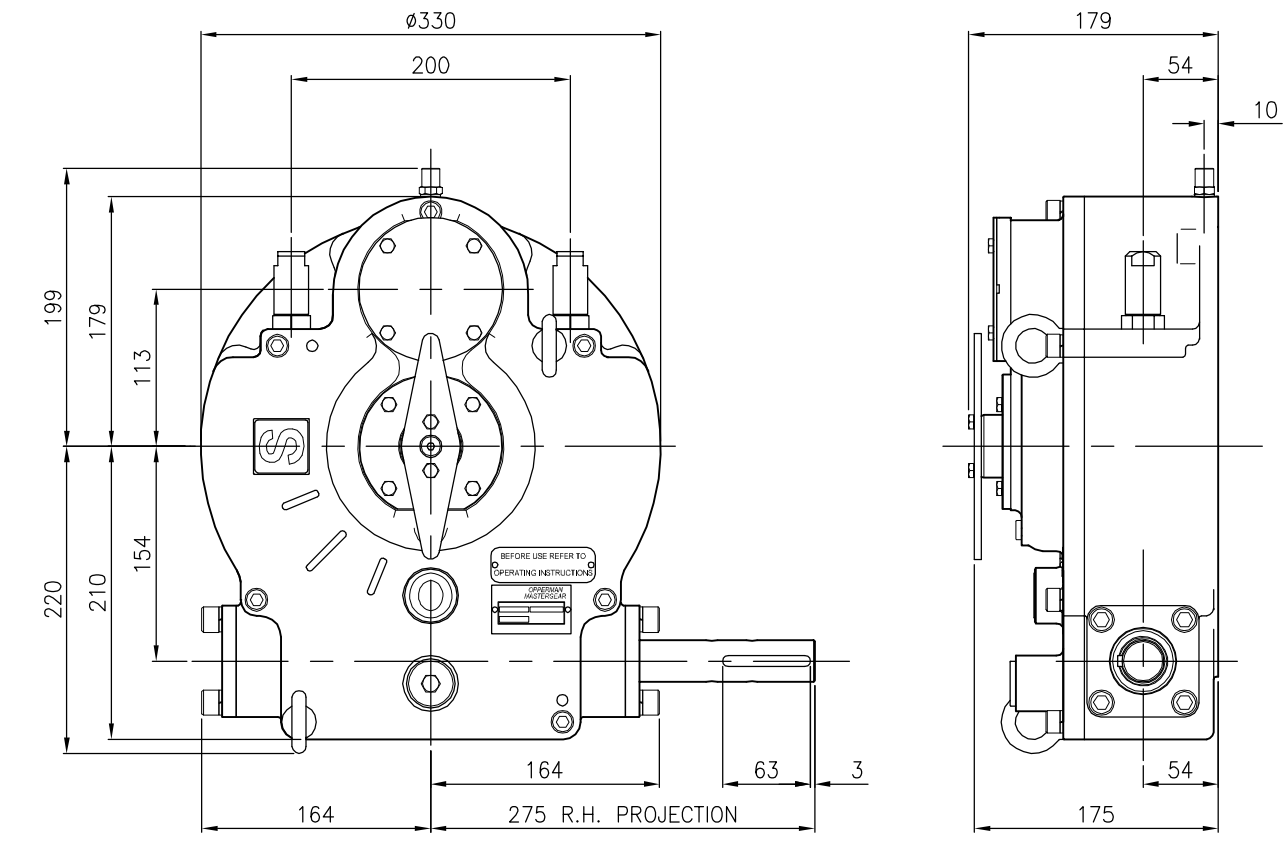
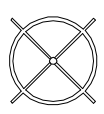


ACTUATOR: M16 SUBSEA


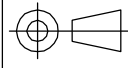
SL150




CAPSTAN TYPE HANDWHEEL
 REFERENCE - C4-24
 DIAMETER - 600mm [24"]
 OVER SPOKE - 800mm [32"]

TRAVEL	90° ±5° AT BOTH ENDS	MECHANICAL ADVANTAGE	28.4 ± 10%
RATIO	88:1	MAXIMUM OUTPUT TORQUE(1000 Cycles) ...	5400 Nm
TURNS TO CLOSE	22	MAXIMUM INPUT TORQUE	190 Nm

MOUNTING HOLE DETAIL (ISO 5211)		APPROXIMATE WEIGHT	61 kg
PREFERRED	F25 (8 x M16 ON 254 PCD)		
MAXIMUM	F30 (8 x M20 ON 298 PCD)		
MINIMUM	F16 (4 x M20 ON 165 PCD)		

 OPPERMAN MASTERGEAR Hambridge Lane, Newbury, Berkshire, RG14 5TS. ENGLAND Tel: 01635 811500 Fax: 01635 811501 E-Mail: sales@opperman-mastergear.co.uk	 To BS308	DIMENSIONS IN MM [INCHES]	DATE	05Aug08
			DRAWN	PAB
			CHECKED	
			SCALE	1:5
This drawing/design is the property of OPPERMAN MASTERGEAR Ltd. © and must not be used or copied without their specific written consent. Specifications may change without prior notification		DRG No.	ME-16159	REV. A