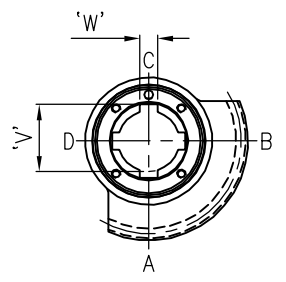
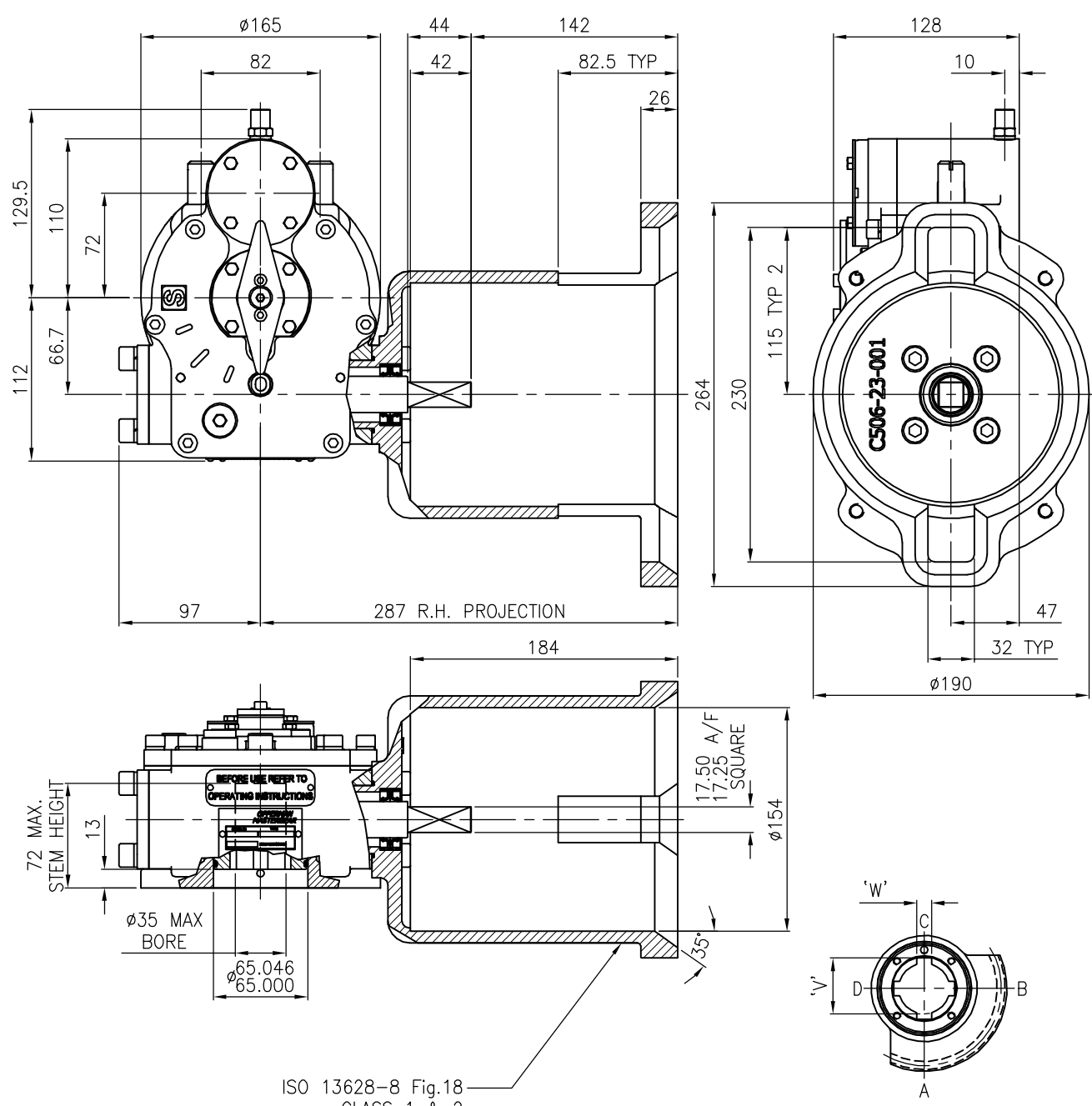


ACTUATOR: M12 SUBSEA (CLASS 1 & 2) SL150



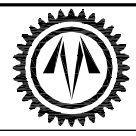
OUTPUT KEYWAY DETAILS SHOWN IN OPEN POSITION

ISO 13628-8 Fig.18
CLASS 1 & 2
ROV RECEPTACLE

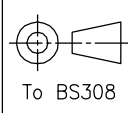
TRAVEL	90° ±5° AT BOTH ENDS	MECHANICAL ADVANTAGE.....	13.8 ± 10%
RATIO	42:1	MAXIMUM OUTPUT TORQUE(1000 Cycles)....	1200 Nm
TURNS TO CLOSE	10.5	MAXIMUM INPUT TORQUE.....	87 Nm

MOUNTING HOLE DETAIL (BSENISO 5211:2001)

PREFERRED	F12 (4 x M12 ON 125 PCD)	APPROXIMATE WEIGHT	24.5 kg
MAXIMUM	F14 (4 x M16 ON 140 PCD)		
MINIMUM	F10 (4 x M10 ON 102 PCD)		



OPPERMAN MASTERGEAR
Hambridge Lane, Newbury, Berkshire, RG14 5TS. ENGLAND
Tel: 01635 811500 Fax: 01635 811501 E-Mail: sales@opperman-mastergear.co.uk



DIMENSIONS IN MM [INCHES]	DATE	12Aug08
	DRAWN	PAB
	CHECKED	
	SCALE	1:4

This drawing/design is the property of OPPERMAN MASTERGEAR Ltd. © and must not be used or copied without their specific written consent. Specifications may change without prior notification

DRG No. ME-16158-2 REV. B