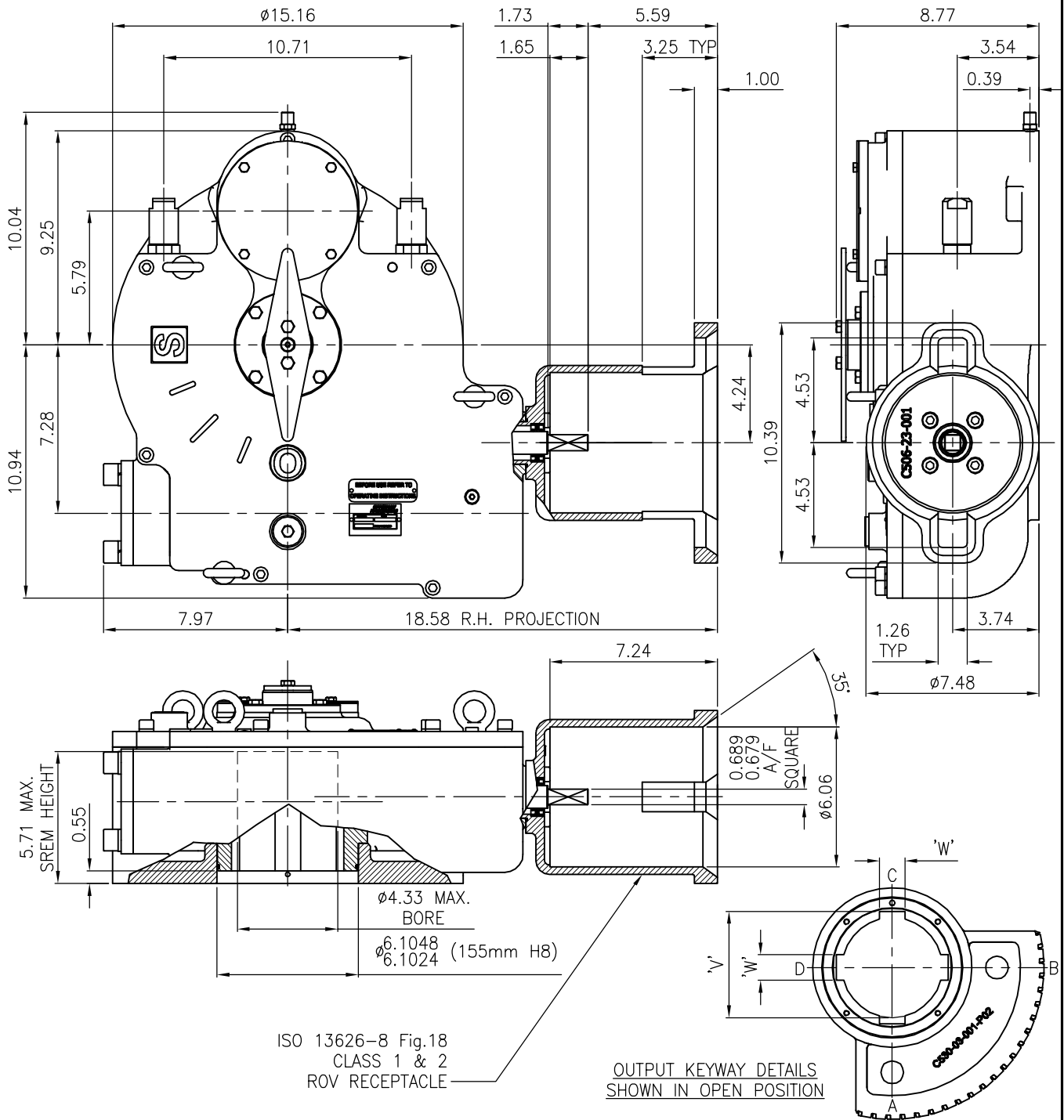


# ACTUATOR: M30 SUBSEA (CLASS 1 & 2) SL150



TRAVEL .....	$90^\circ \pm 5^\circ$ AT BOTH ENDS	MECHANICAL ADVANTAGE .....	$99.0 \pm 10\%$
RATIO .....	309.1:1	MAXIMUM OUTPUT TORQUE(1000 Cycles)....	115000 lb.ins.
TURNS TO CLOSE .....	77.3	MAXIMUM INPUT TORQUE .....	1160 lb.ins.

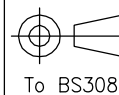
MOUNTING HOLE DETAIL (BSENISO 5211:2001)

PREFERRED .....	F30 ( 8 x M20 ON 11.73" PCD)	APPROXIMATE WEIGHT .....	305 lb.
MAXIMUM .....	( 8 x M20 ON 14.02" PCD)		
MINIMUM .....	F20 ( 8 x M12 ON 7.76" PCD)		



**OPPERMAN MASTERGEAR**

Hambridge Lane, Newbury, Berkshire, RG14 5TS. ENGLAND  
Tel: 01635 811500 Fax: 01635 811501 E-Mail: sales@opperman-mastergear.co.uk



To BS308

DIMENSIONS IN  
MM [INCHES]

DATE	26Aug08
DRAWN	PAB
CHECKED	
SCALE	1:6

This drawing/design is the property of OPPERMAN MASTERGEAR Ltd. © and must not be used or copied without their specific written consent. Specifications may change without prior notification

DRG No. ME-16164-2-imp REV. A