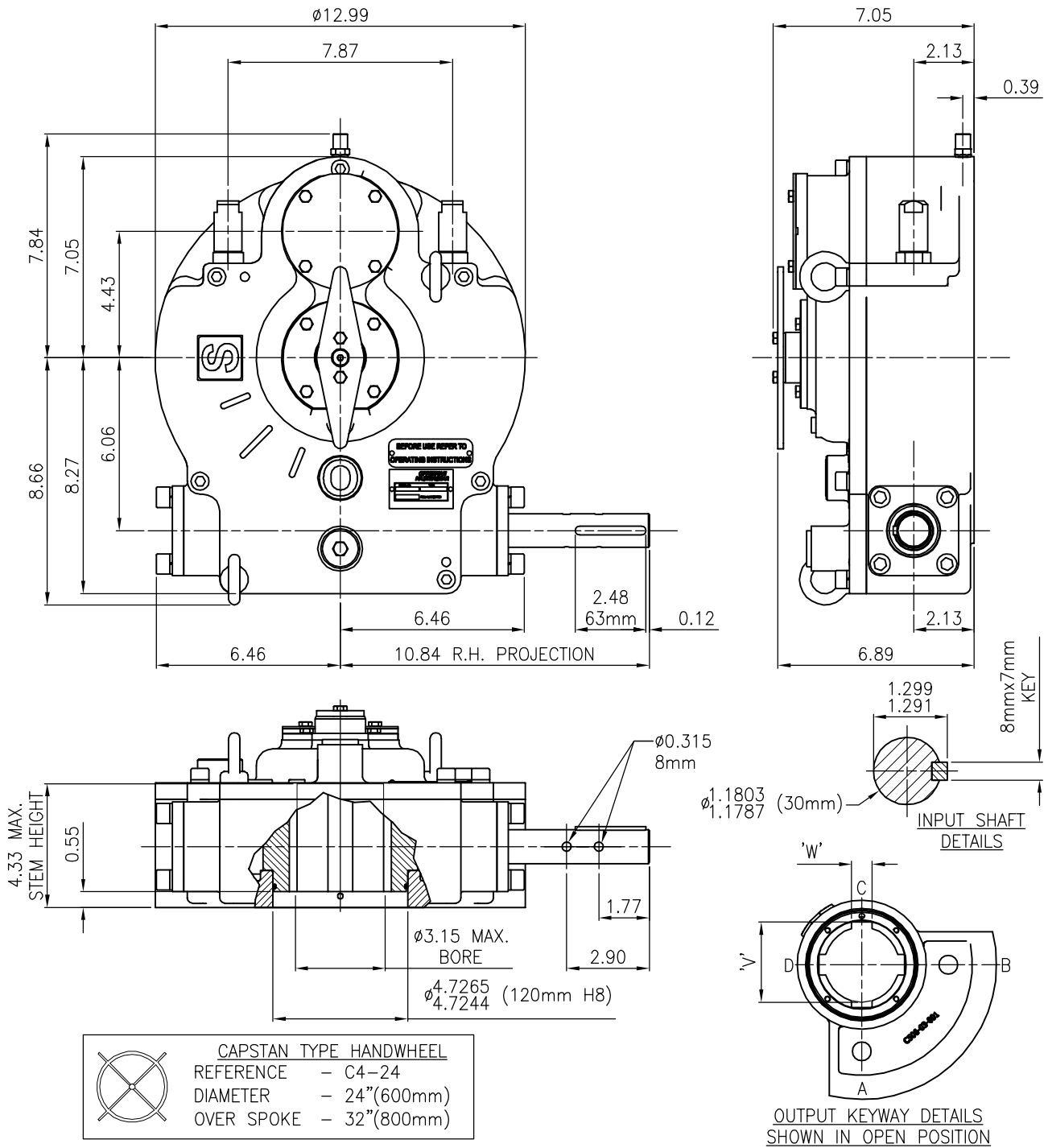


# ACTUATOR: M16 SUBSEA

# SL150



TRAVEL .....	90° ±5° AT BOTH ENDS	MECHANICAL ADVANTAGE .....	28.4 ± 10%
RATIO .....	88:1	MAXIMUM OUTPUT TORQUE(1000 Cycles)....	47800 lb.ins.
TURNS TO CLOSE .....	22	MAXIMUM INPUT TORQUE.....	1680 lb.ins.

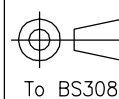
### MOUNTING HOLE DETAIL (ISO 5211)

PREFERRED .....	F25 (8 x M16 ON 10.00" PCD)	APPROXIMATE WEIGHT .....	135 lb.
MAXIMUM .....	F30 (8 x M20 ON 11.73" PCD)		
MINIMUM .....	F16 (4 x M20 ON 6.50" PCD)		



## OPPERMAN MASTERGEAR

Hambridge Lane, Newbury, Berkshire, RG14 5TS. ENGLAND  
 Tel: 01635 811500 Fax: 01635 811501 E-Mail: sales@opperman-mastergear.co.uk



DIMENSIONS IN INCHES [mm]

DATE	19Aug08
DRAWN	PAB
CHECKED	
SCALE	1:5

This drawing/design is the property of OPPERMAN MASTERGEAR Ltd. © and must not be used or copied without their specific written consent. Specifications may change without prior notification

DRG No. ME-16159-imp

REV. A