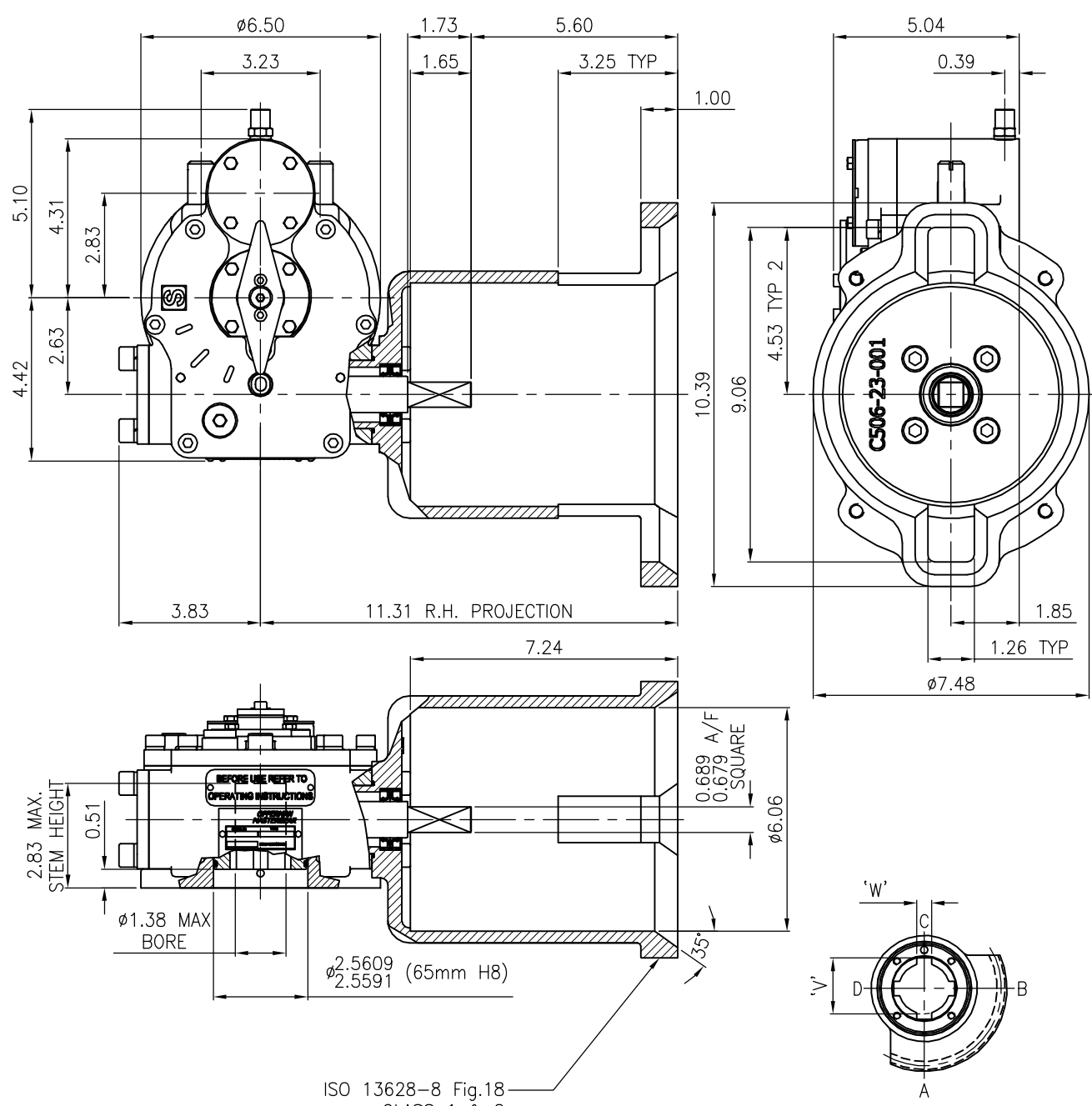


# ACTUATOR: M12 SUBSEA (CLASS 1 & 2) SL150



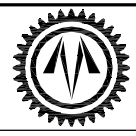
ISO 13628-8 Fig.18  
CLASS 1 & 2  
ROV RECEPTACLE

OUTPUT KEYWAY DETAILS  
SHOWN IN OPEN POSITION

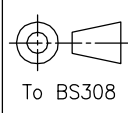
TRAVEL .....	90° ±5° AT BOTH ENDS	MECHANICAL ADVANTAGE.....	13.8 ± 10%
RATIO .....	42:1	MAXIMUM OUTPUT TORQUE(1000 Cycles)....	10600 lb.ins.
TURNS TO CLOSE .....	10.5	MAXIMUM INPUT TORQUE.....	770 lb.ins.

MOUNTING HOLE DETAIL (BSENISO 5211:2001)

PREFERRED .....	F12 ( 4 x M12 ON 4.92" PCD)	APPROXIMATE WEIGHT .....	54 lb.
MAXIMUM .....	F14 ( 4 x M16 ON 5.51" PCD)		
MINIMUM .....	F10 ( 4 x M10 ON 4.01" PCD)		



**OPPERMAN MASTERGEAR**  
Hambridge Lane, Newbury, Berkshire, RG14 5TS. ENGLAND  
Tel: 01635 811500 Fax: 01635 811501 E-Mail: sales@opperman-mastergear.co.uk



DIMENSIONS IN	DATE	20Aug08
	DRAWN	PAB
INCHES [MM]	CHECKED	
	SCALE	1:4

This drawing/design is the property of OPPERMAN MASTERGEAR Ltd. © and must not be used or copied without their specific written consent. Specifications may change without prior notification

DRG No. ME-16158-2-imp REV. B