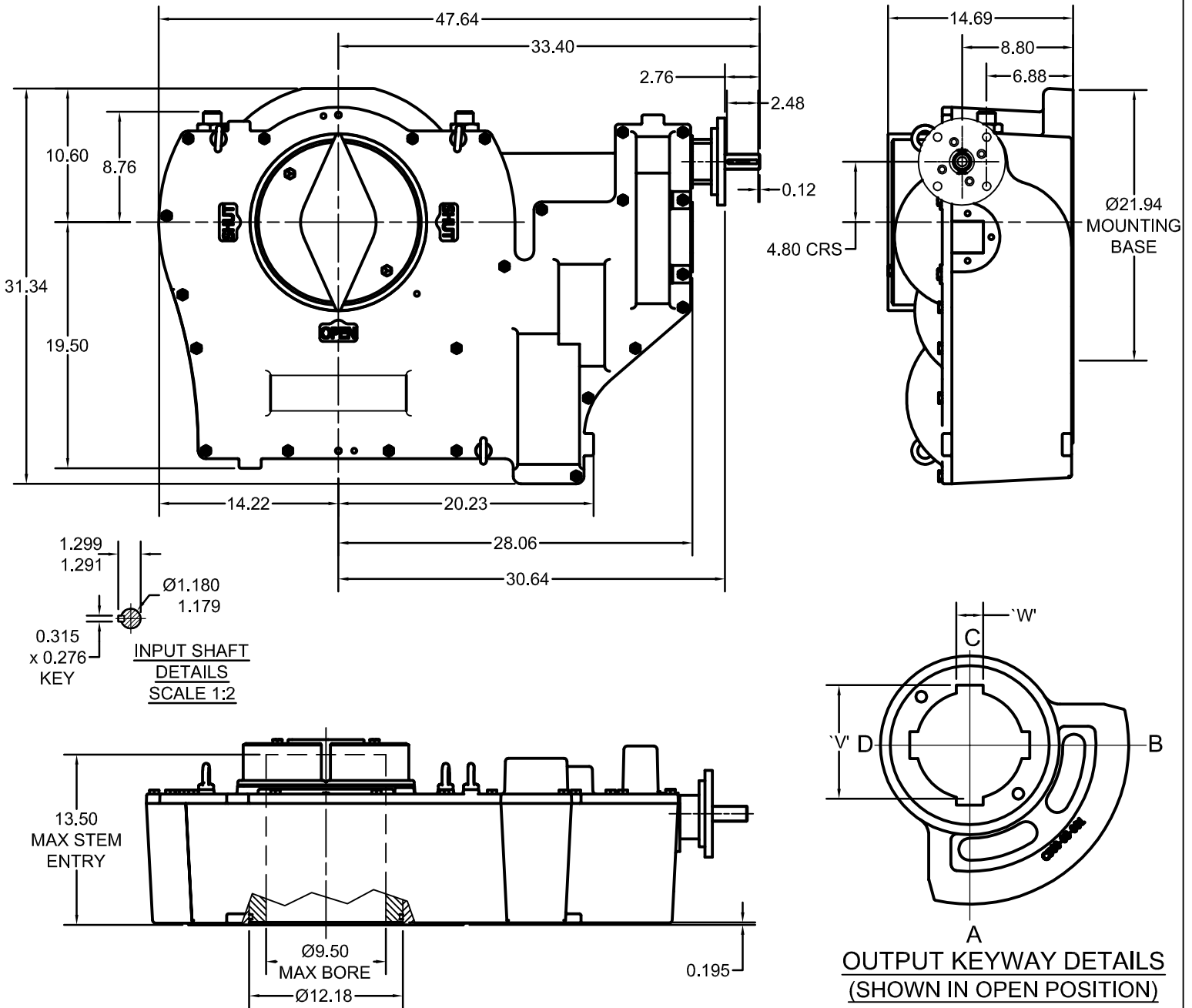


# ACTUATOR: MF70/FA14

# SL039



## GENERAL INFORMATION

TRAVEL.....90° ±5° AT BOTH ENDS

RATIO.....3407.8:1

URNS TO CLOSE.....851.96

MECHANICAL ADVANTAGE...657.5 ±10%

MAXIMUM OUTPUT TORQUE(2500 CYCLES)....1,500,000 IN-LBS

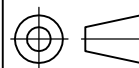
MAXIMUM INPUT TORQUE(2500 CYCLES).....2,282 IN-LBS

MOUNTING HOLE DETAIL: PREFERRED....FA48 (12 x 1 1/4 ON 19.00" BCD)

(MSS SP-101) MAXIMUM.....FA48

MINIMUM.....FA40 (8 x 1 1/4 ON 16.00" BCD)

APPROXIMATE WEIGHT.....1,760 LBS



DIMENSIONS  
IN  
INCHES

SCALE

1:12

DRAWING  
No.

MF70/FA14

THIS PRINT IS CONFIDENTIAL AND IS THE PROPERTY OF MASTERGEAR. THIS PRINT SHALL NOT BE USED, COPIED OR REPRODUCED IN WHOLE OR IN PART NOR SHALL THE CONTENTS BE REVEALED IN ANY MANNER TO ANYONE UNLESS WRITTEN PERMISSION IS OBTAINED FROM MASTERGEAR.

NJC

REV. B

5/29/09